

1822 SCARTH STREET

REGINA, SK



BUILDING HIGHLIGHTS

- Located in the heart of downtown Regina, on Scarth Street, between 11th and 12th Avenues.
- Frontage onto the downtown pedway system, and adjacent to the Hill Centre Parkade, providing foot traffic and visibility, alongside an abundance of covered parking stall opportunities.
- Pedway access to the Cornwall Centre, via the Bank of Montreal building, in addition to the Hill Centre Tower I, II, and III via the Hill Centre Parkade.
- Shared common area on the 2nd floor, which features men's and women's washrooms.
- Major tenants in the vicinity include Bank of Montreal, The Globe Theatre, SaskTel, SGI, CIBC, FCC.
- Excellent access to all major transit routes.
- Close proximity to all downtown amenities, restaurants, retail and hotels.
- Professionally managed and maintained by the Property Management team at Harvard Developments.

AVAILABLE SPACE

SUITE 100

4,263 SQUARE FEET

SUITE 200

2,835 SQUARE FEET

RENTAL RATE |
NEGOTIABLE

OP COSTS & PROPERTY TAXES
\$18.76 PSF PER ANNUM

CHANTAL BLAISDELL

LEASING MANAGER, HARVARD DEVELOPMENTS

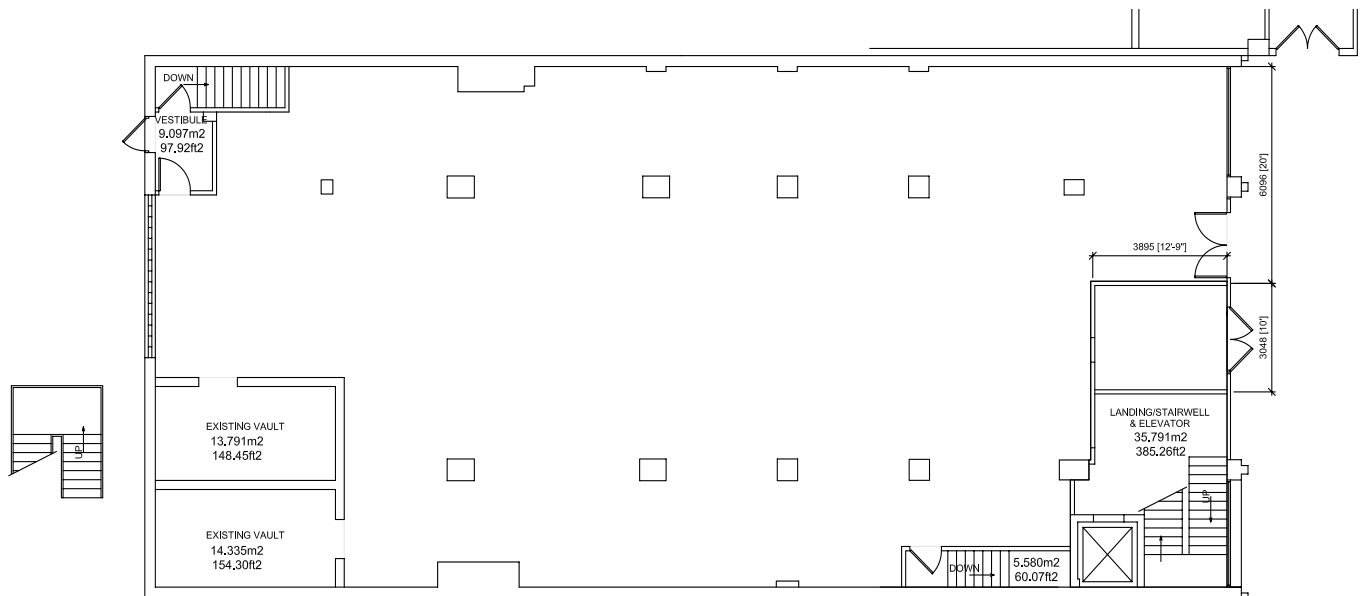
T | 306.777.0641

E | cblaisdell@harvard.ca

1822 SCARTH STREET
REGINA, SK

SUITE 100

4,263
SQUARE FEET



 1 MAIN FLOOR PRELIMINARY PLAN
A1.1 SCALE:NTS

CHANTAL BLAISDELL

LEASING MANAGER, HARVARD DEVELOPMENTS

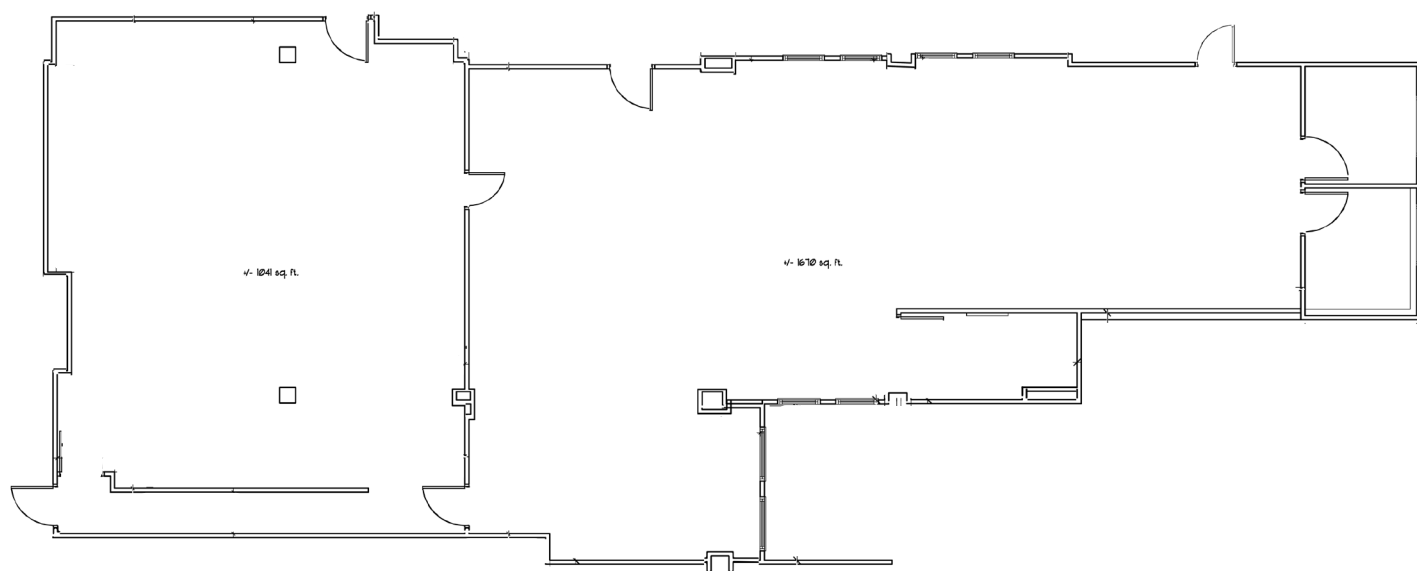
T | 306.777.0641

E | cblaisdell@harvard.ca

1822 SCARTH STREET
REGINA, SK

SUITE 200

2,835
SQUARE FEET



EXISTING FLOOR PLAN

CHANTAL BLAISDELL

LEASING MANAGER, HARVARD DEVELOPMENTS

T | 306.777.0641

E | cblaisdell@harvard.ca